

A hand is shown holding a wooden handle of a brass stamp, positioned over a document. The background is dark and blurred, suggesting an office or legal setting. The text is overlaid on a black rectangular background.

**Hoe Threat Intelligence u
helpt bij het nemen van
betere
beveiligingsbeslissingen**

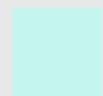
NIS2-opvolgwebinars

Praktische afspraken

- Vragen via chat
- Iedereen op mute
- Q&A na de presentatie
- Evaluatie met link naar de slides worden na de webinar doorgestuurd



inetum.
realdolmen
Positive digital flow



Secutec
Cyber security intelligence



Secutec
Cyber security intelligence



PREVENT NOW ♦ SECURE TOMORROW

3 business units



Own Secutec
Solutions



Reseller/third
party business



Banking Services

About Secutec



20M

20 MIL. EUR



60

ACTIVE IN 60
COUNTRIES



800

CUSTOMERS



85

EMPLOYEES



25Y

EXPERIENCE IN
CYBERSECURITY

**“Empowering companies worldwide
with in-depth cyber security care.”**

- OUR MISSION -

**“The worldwide reference in
unconventional cyber security.”**

- OUR VISION -

Secutec SecureDNS

DETECT AND BLOCK NEW THREATS FASTER THAN
YOUR CURRENT SECURITY SOLUTION.





Asset Management

Identify Management and Access Control

Anomalies and Events

Response Planning

Recovery Planning

Business Environment

Awareness and Training

Security Continuous Monitoring

Communications

Improvements

Governance

Data Security

Detection Processes

Analysis

Communications

Risk Assessment

Info Protection and Procedures

Mitigation

Risk Management Strategy

Maintenance

Improvements

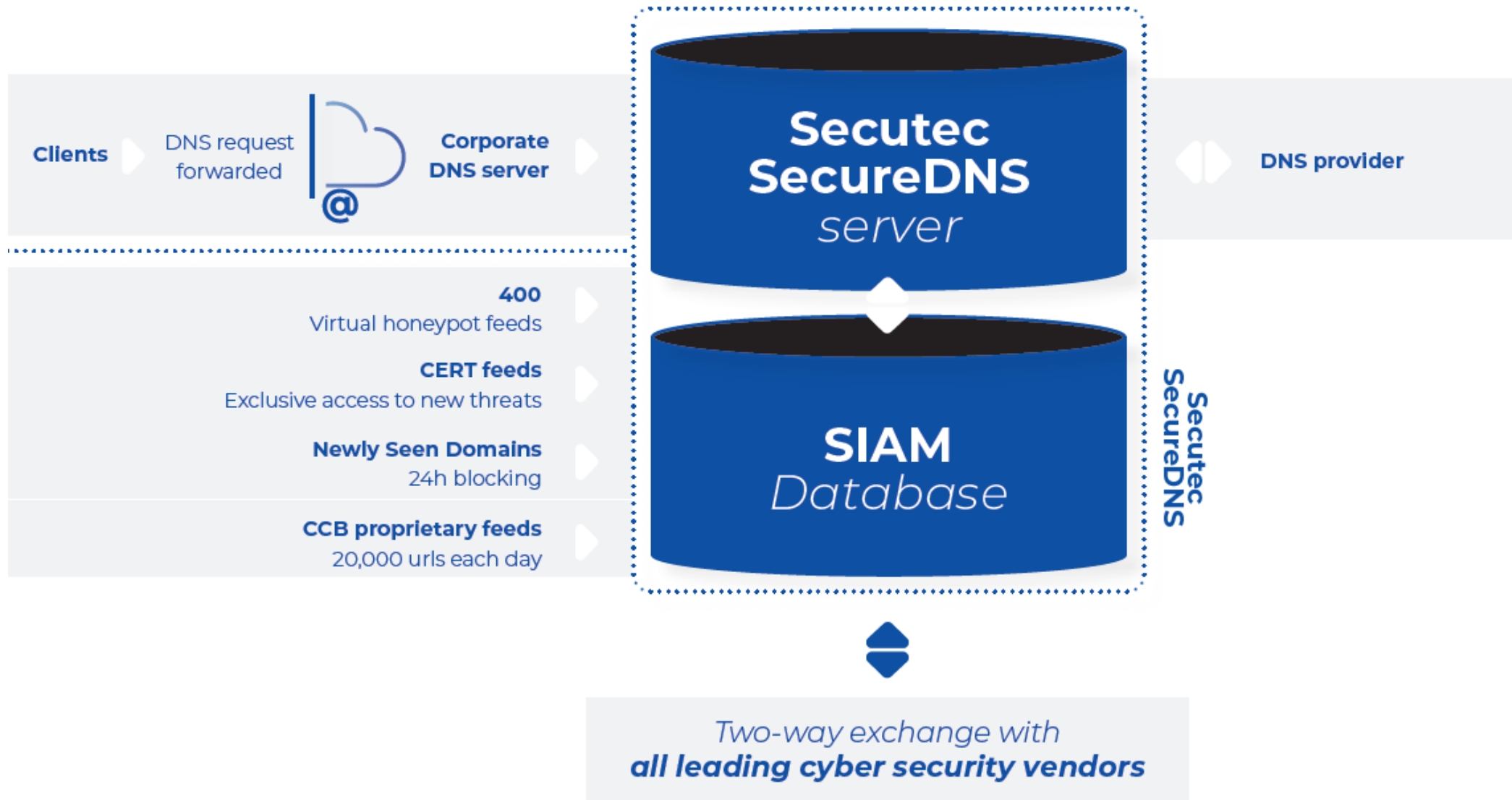
Supply Chain Risk Management

Protective Technology

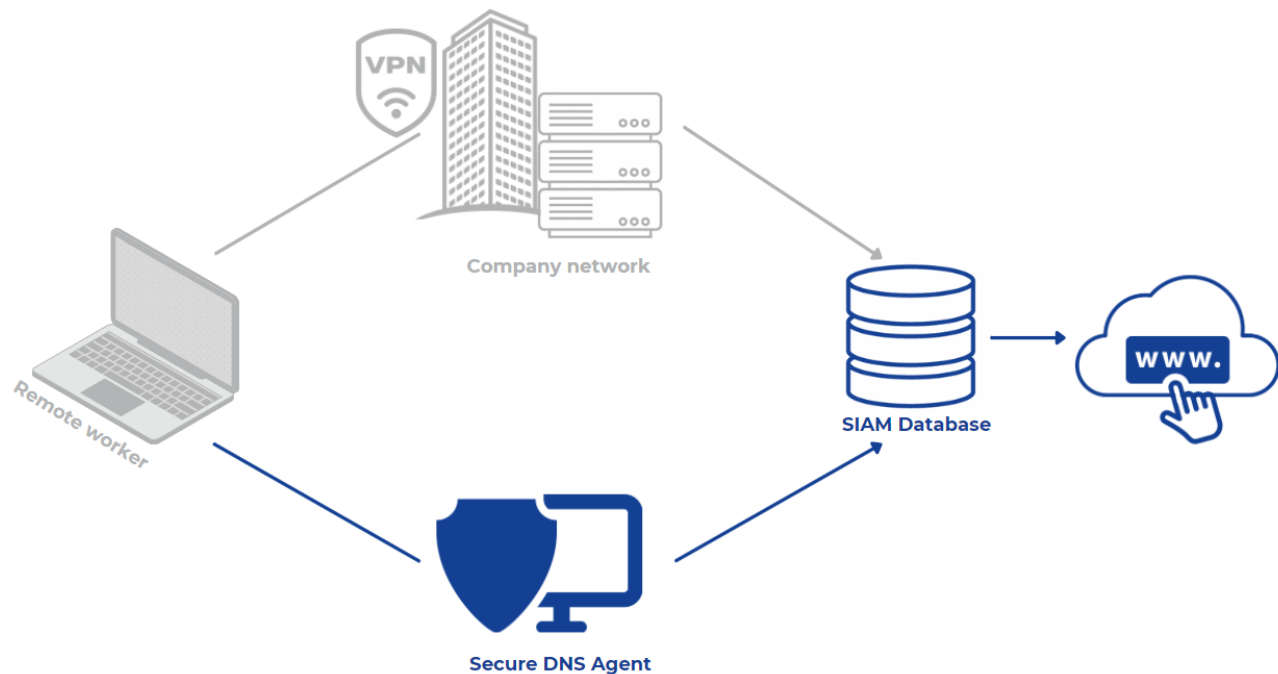


91% of all malware relies on DNS resolution

Secutec SecureDNS is a fast protocol that prevents devices in your company from connecting to malicious domains. It serves as an extra security software that protects your network against malware, phishing attacks or any other cyberattack.



Employees will never stop clicking bad links



Be safe, even if you are outside your network or traveling

Secutec SecureDNS Agent

Protect your employees anywhere: whenever they are working from home, at the airport, at a co-working space,... your employees can always work safely with the Secure DNS Agent.

No VPN connection, no problem! You're still protected!

Employees don't always connect to the VPN when they are working remotely. No worries with the Secure DNS Agent your employees will always be protected when browsing on the Internet.

No end user action needed: your employees don't have to perform any additional manual action to make use of the agent.

No extra hardware needed: there is no additional hardware necessary to use the agent.

Benefits of Secutec Secure DNS

Block faster – detect more – prevent proactively

- ✓ Reporting dashboard
- ✓ High-performant security service
- ✓ Complete network security
- ✓ SOC alerts – malicious detections immediately reported

Peace of mind

- ✓ Support within 24 hours
- ✓ Implementation in less than 60 minutes

Easy to implement

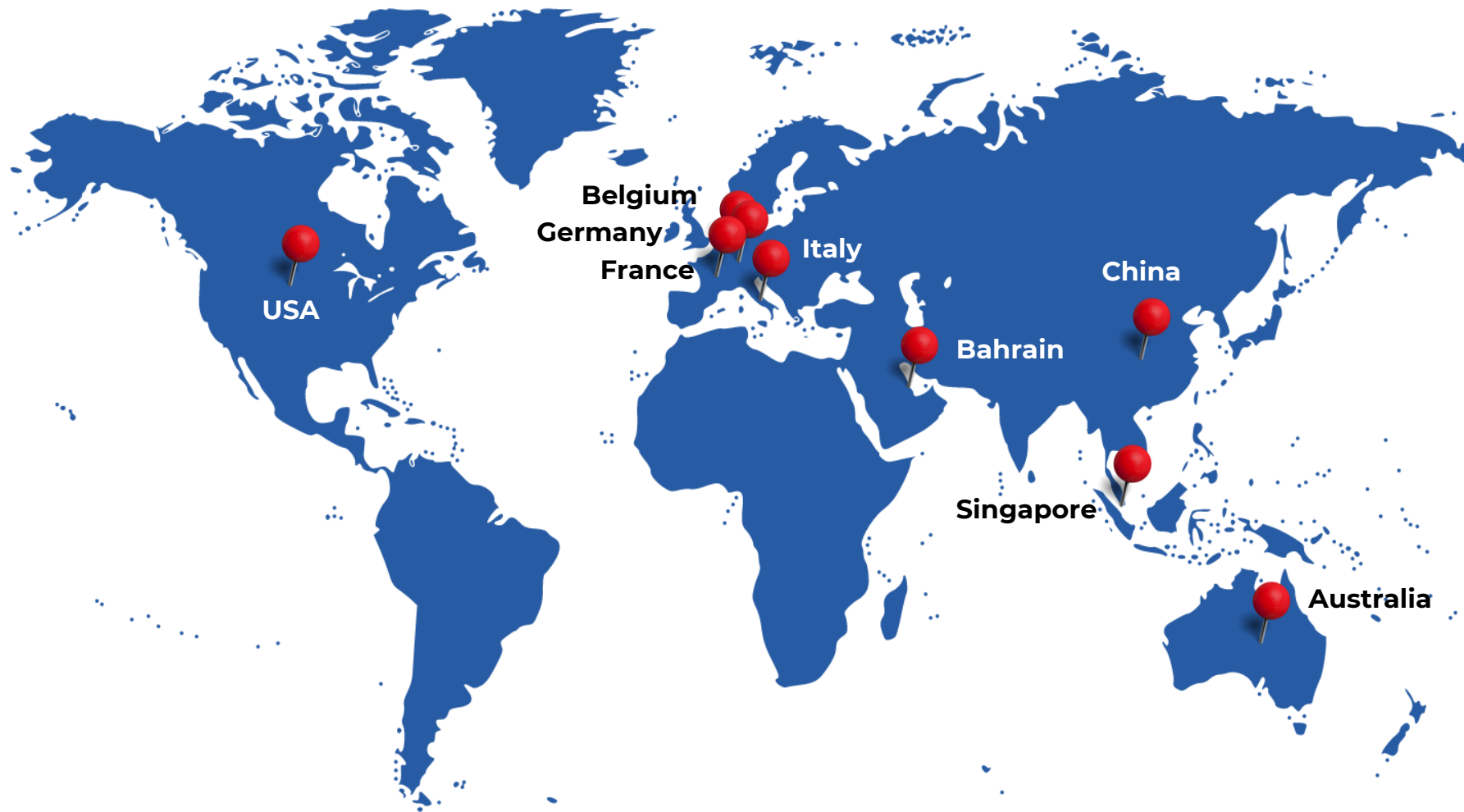
- ✓ System independent
- ✓ Seamless infrastructure integration
- ✓ No additional hardware or software required

A safe team, wherever they work

- ✓ Safe web browsing guaranteed
- ✓ Fast connections assured
- ✓ Remote and mobile cybersafety
- ✓ We keep all your devices safe



Secutec SecureDNS data centres



No-one tells it better than our customers...



“Secutec SecureDNS works nice and simple, I can see that our anti-virus is working but Secutec SecureDNS offers an extra protection layer”

– Pieter Verheyden, VAB



“We are very satisfied about the response time of the detection and the extra protection layer on top of our firewall and antivirus.”

– Kurt Debersaques, RENSON

Secutec SecureSIGHT

DISCOVER HOW THREAT INTELLIGENCE HELPS YOU
MAKE BETTER CYBERSECURITY DECISIONS



Secure SIGHT

Powered by Secutec





✂ Asset Management

✂ Identify Management and Access Control

✂ Anomalies and Events

✂ Response Planning

✂ Recovery Planning

✂ Business Environment

✂ Awareness and Training

✂ Security Continuous Monitoring

✂ Communications

✂ Improvements

Governance

✂ Data Security

✂ Detection Processes

✂ Analysis

✂ Communications

✂ Risk Assessment

✂ Info Protection and Procedures

✂ Mitigation

Risk Management Strategy

Maintenance

✂ Improvements

✂ Supply Chain Risk Management

✂ Protective Technology



PREVENT

Leaked Credentials & Darknet Monitoring

- Protect **sensitive data**
- Prevent **account-takeover**
- Fulfill industry **compliance** and maintain **trust**
- Immediate **alerts** when personal identifiable information is discovered
- **Early warning system** for data breaches

Add a proactive layer to your security infrastructure

What about MFA?

"MFA is a crucial component..."

But...

"While MFA is an effective defense mechanism, cybercriminals are becoming increasingly sophisticated in their attack methods."

6 Ways to bypass MFA

- Social Engineering
- Consent Phishing
- Brute Force
- Exploiting Generated Tokens
- Session Hijacking
- SIM Hacking

Source: <https://www.upguard.com/blog/how-hackers-can-bypass-mfa>

Most organizations and consumers still are not aware of the massive breadth of digital identity data that is easily stolen from infected devices and made readily available on the darknet*

15%

of all attack vectors in 2023 were based on stolen or compromised credentials**

43,7 billion

Distinct identity records

560 billion

Stolen assets

61%

Of breaches are malware-related

**Spycloud 2023 Identity Exposure Report*

*** IBM 'Cost of a Data Breach Report 2022 & 2023'*

The Dark Web



Clear Web

- internet known to us
- visible to all users
- accessible via Google & Co.

Deep Web

- restricted or non-indexed sites
- databases, websites & services from Government, Organisations or Universities

Dark Web

- not findable in the normal way
- encrypted communication
- creators and visitors want to remain anonymous
- illegal content, political protest, private communications

The Darkweb

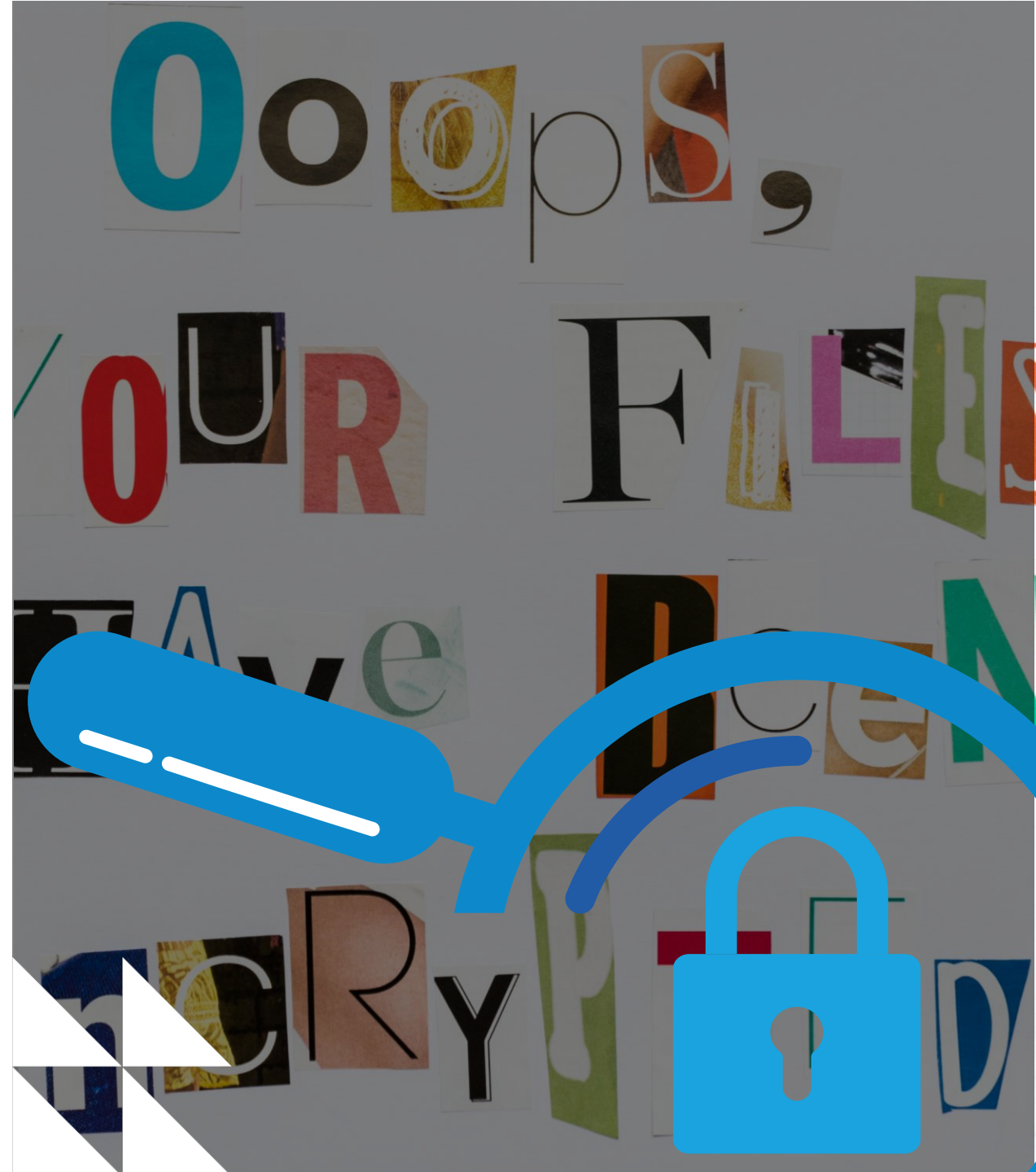


- Russian Darkweb
- Persian Darkweb
- English Darkweb
- Chinese Darkweb

About 150 Black markets are known – 2,2 Mio. Daily Darknet User

Secutec SecureRESPONSE

24/7 EMERGENCY RESPONSE TO HACKERS





✂ Asset Management

✂ Identify Management and Access Control

✂ Anomalies and Events

✂ Response Planning

✂ Recovery Planning

✂ Business Environment

✂ Awareness and Training

✂ Security Continuous Monitoring

✂ Communications

✂ Improvements

Governance

✂ Data Security

✂ Detection Processes

✂ Analysis

✂ Communications

✂ Risk Assessment

✂ Info Protection and Procedures

✂ Mitigation

Risk Management Strategy

Maintenance

✂ Improvements

✂ Supply Chain Risk Management

✂ Protective Technology

Incident Response

- Cybersecurity Incident Response Team (CSIRT)
- Forensic analysis & Investigation
- Recovery Services
- Monitoring in the Cyber-SOC
- Negotiation with hackers
- Internal & External communication
- Technical protective shield after the incident



FORENSICS

Investigation

- **How** did they get in?
- **What tools** did they use?
- **How long** do they stay on your network?
- **What steps** do they take on your network before you noticed your data is encrypted?
- What was **stolen**?
- What do they do with the **back-up**?
- ...

Incident Response SLA



- Elevate your assurance
- Extended expertise in reaction and recovery from cybersecurity breaches
- 24/7 Incident support service
- Activation of service within 4 hours

Secutec

Cyber security intelligence



Secutec

Secutec

SECURITY IN DEPTH

Secutec

SaaSforce



Next steps

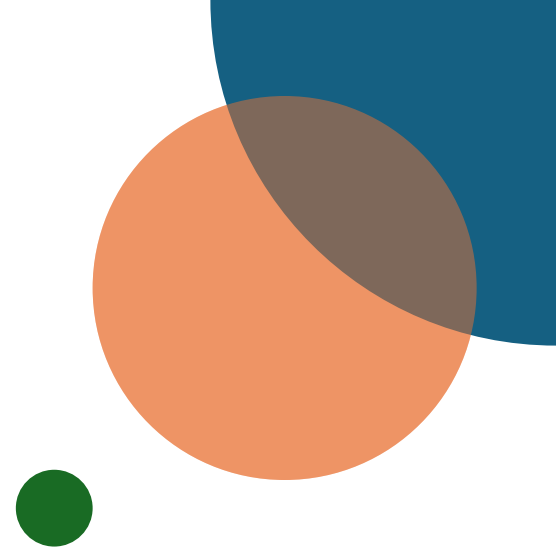
How Inetum-Realdolmen can help

At Inetum-Realdolmen, we understand the importance of cybersecurity and the need to comply with regulatory frameworks such as NIS2

We provide tools and guidance to help you meet the minimum measures required by NIS2, such as risk assessments, security procedures, and incident response plans

Our team of cybersecurity experts can work with you to assess your current security posture and develop a customized security plan that meets your specific needs

You can have peace of mind knowing that your systems and data are protected by industry-leading security solutions.



CYBERSECURITY ACCELERATOR PROGRAM



Identify & Inspire

Audit & Assessment
Ethical hacking
Roadmap
Proof of Concept

Protect & Integrate

Zero Trust implementation

- Identities
- Devices
- Data
- Applications
- Networks & Infrastructure

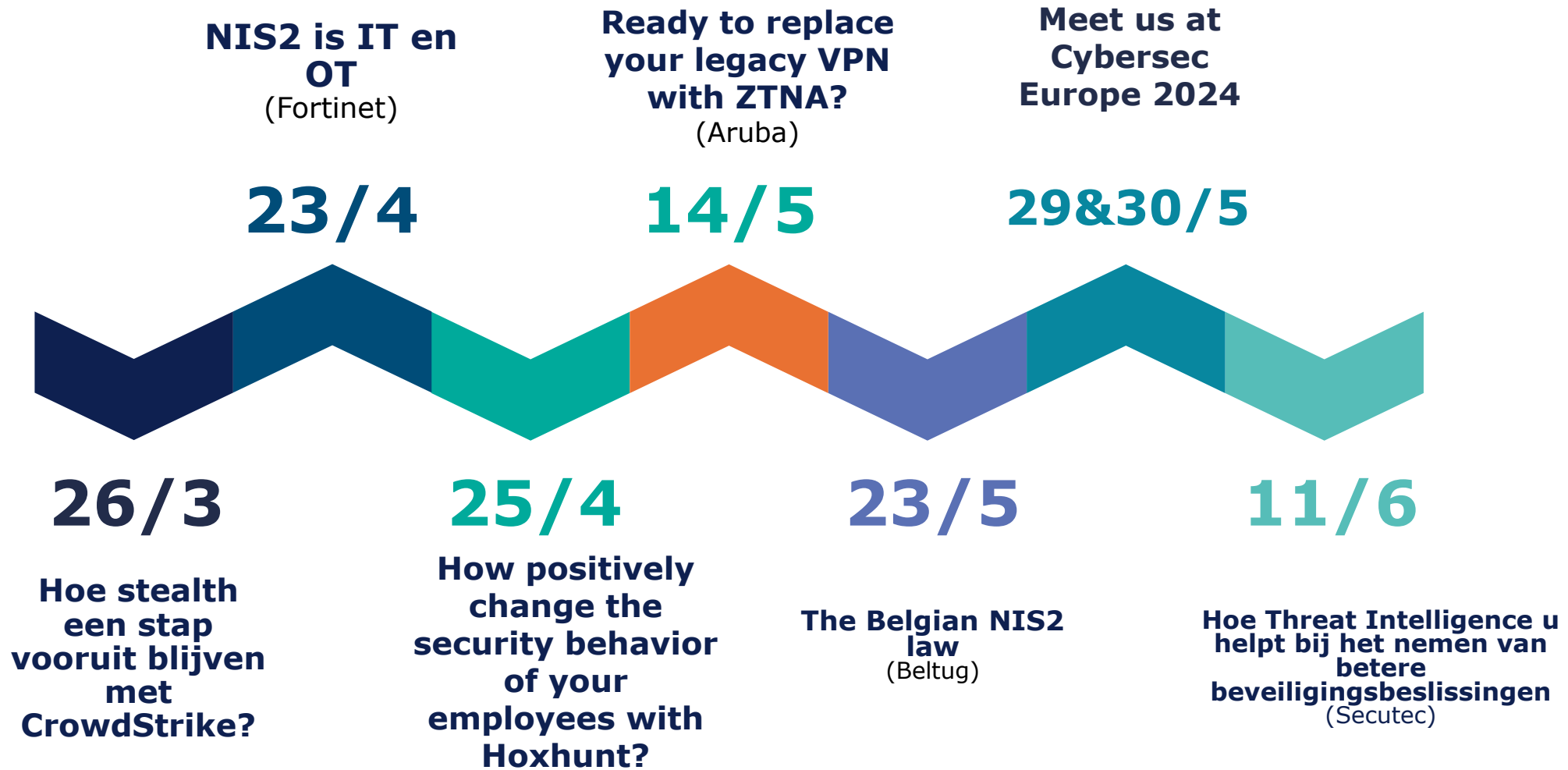
Detect & Operate

Managed Security Services
Vulnerability Management
MDR Services

Respond & Optimize

Incident Response
Governance
CISO as a Service
User Awareness

Opvolgevents NIS2





Contacteer ons via:

- info@inetum-realdolmen.world
- Uw vertrouwde contactpersoon bij Inetum-Realdolmen

A hand holding a wooden mallet over a document, with a large black box containing the text 'Q&A' overlaid on the image. The background is dark and blurred, showing a desk with papers and a laptop. There are teal geometric shapes in the corners: a large L-shaped shape in the top right and a small square in the bottom left.

Q&A



Bedankt