

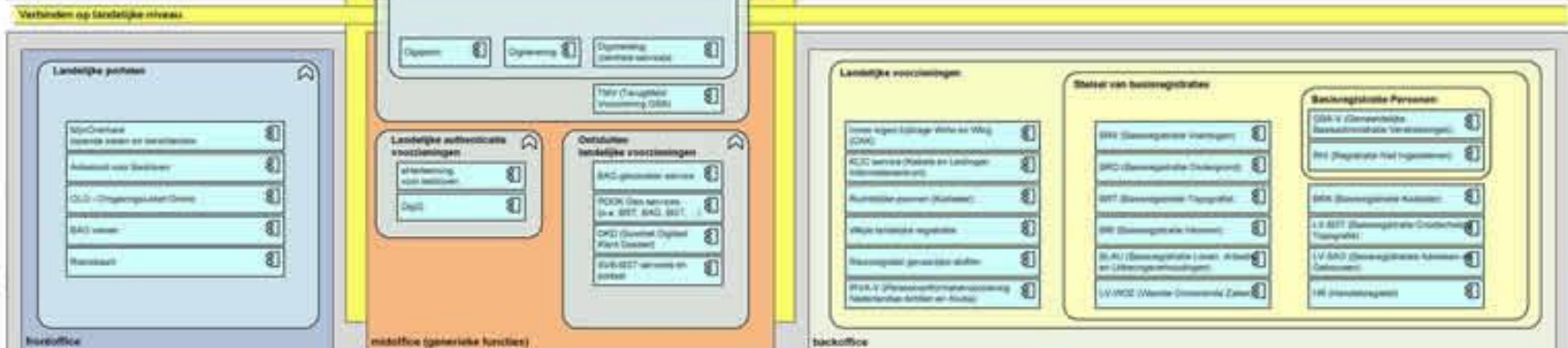
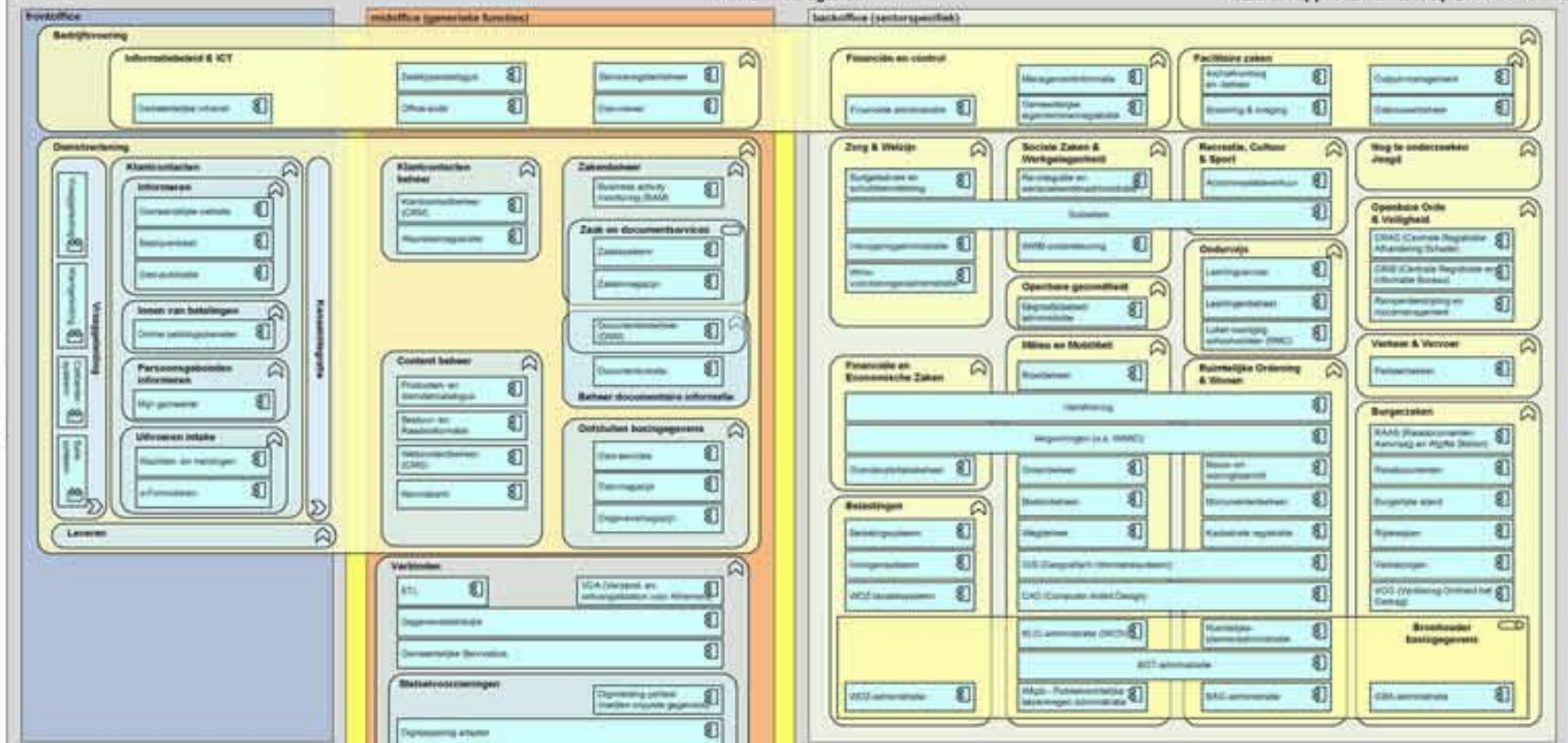


**Bonjour**  
**Good morning**  
**Goeiemorgen**

HI, I AM STEFAN SMEETS, UNIT MANAGER THE CONNECTED COMPANY AND I AM GOING TO TALK ABOUT ....

# Why build and modernise your application with the Azure Cloud ?





Overige organisaties federatieve overheid, waaronder ketenpartners en aanbieders landelijke voorzieningen

**Waarom is het GEMMA applicatielandschap gemaakt?**  
 Het GEMMA applicatielandschap is gemaakt als hulpmiddel voor het verkrijgen van inzicht in het huidige gemeentelijk applicatielandschap. De plaat helpt hierbij door deze te gebruiken als grondplaat voor het maken van verschillende views. B.v. een overzicht van een gemeente, het productportfolio van een leverancier of het weergeven van ketens en koppelvakken tussen applicaties.

**Legenda**  
 Het GEMMA applicatielandschap is gemodelleerd met ArchiMate®, de standaard modeltaal voor Enterprise Architectuur (EA). ArchiMate is een open en onafhankelijke modelbestaandheid en wordt beheerd door The Open Group®.

**Bedrijfsfunctie**  
 De bedrijfsfuncties in het Applicatielandschap zijn gebaseerd op de door de VNG gehanteerde indeling in gemeentelijke beleidsvelden. Een voorbeeld van een bedrijfsfunctie is het beleidsveld burgerzaken.

**Bedrijfsrol**  
 Een gemeente kent meerdere rollen in het kader van de stelsel van basisregistraties. Naast de rol afnemer is een gemeente bronhouder voor enkele registraties.

**Applicatiefunctie**  
 De applicatiefuncties in het applicatielandschap zijn gedefinieerd in de GEMMA informatiearchitectuur. Een voorbeeld van een applicatiefunctie is 'Zakenbeheer'.

**Applicatiecomponent**  
 De applicatiecomponent wordt in het GEMMA applicatielandschap referentiecomponent genoemd. Het GEMMA applicatielandschap is onderverdeeld in een samenhangend geheel van referentiecomponenten. Zie [www.gemmasoftwarecatalogus.nl](http://www.gemmasoftwarecatalogus.nl) voor de beschrijvingen van de referentiecomponenten. Een op de markt verkrijgbaar softwareproduct kan functionaliteit bieden van één of meerdere referentiecomponenten. Het is de verantwoordelijkheid van de leverancier om vast te stellen welke softwareproducten voldoen aan de omschrijving en positie van een referentiecomponent. Een voorbeeld van een referentiecomponent is een 'Zaaksysteem'.

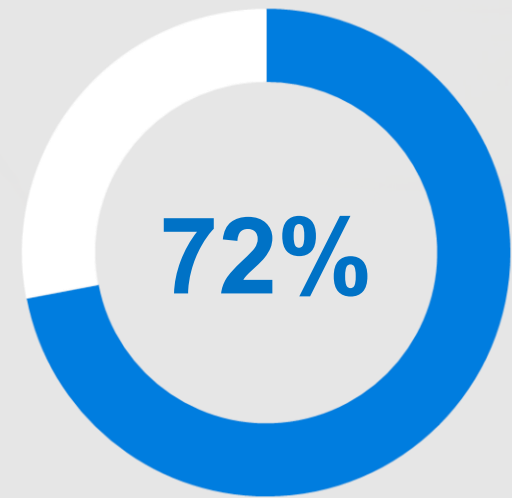
**Applicatieservice**  
 Een applicatieservice stelt (een deel van) de functionaliteit van een applicatiecomponent beschikbaar. Bij voorkeur gebeurt dit via een gestandaardiseerde interface. Een voorbeeld van de applicatieservice zijn de zaak- en documentservices.



72%

of IT budgets are put aside to 'keep the lights on'.

*Gartner*



# MODERN LIFE RUNS ON CODE

Urban traffic control system  
5 million lines of code

Boeing 787  
14 million lines of code

Luxury car  
120 million lines of code

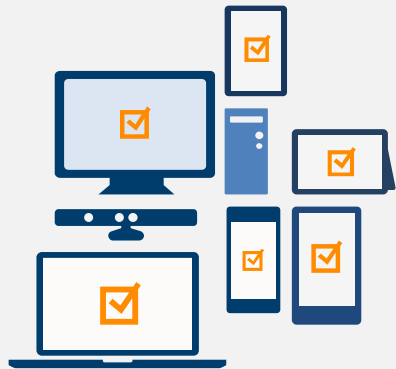


# INDUSTRY TRENDS ARE CREATING NEW OPPORTUNITIES AND CHALLENGES

New apps



Device proliferation



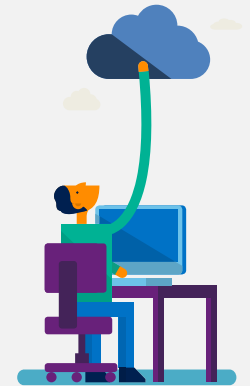
Cyber threat detection



Data explosion



Cloud computing



# Modernization triggers

Urgent capacity needs

Software or hardware refresh

Address security threats

Compliance

Enable new business opportunities

Software end of support

Deliver applications and features faster

Datacenter contracts expiring



“In the future, quality of experience will be determined by how products work together, in concert, with the rest of the eco-system, not just by the quality of the experience of any product on its own—no matter how good that individual experience may be.”

Bill Buxton,  
Principal Researcher, Microsoft Research





A person wearing a grey wool coat is holding a black laptop. The laptop lid is closed and features the Windows logo. The person's hand is visible, resting on the bottom edge of the laptop. The background is a blurred cityscape or office interior.

“Technology-driven disruption is providing exponential growth opportunities”.

Gene Hall, Gartner CEO

# Are your applications ready?



Today

Application silos, built in isolation

Limited set of platforms and form factors

Overabundance of data

Servers and infrastructure to manage

Upfront capacity planning, fixed scale



Future


**Multi-channel** applications, covering all touchpoints

**Many** platforms, devices and form factors

**Data-driven intelligence** in applications

Focus on application **functionality, not infrastructure**

Elastic, unlimited **scale**



# The application journey to the cloud

# The journey to the cloud: much more to choose from



IaaS/VM/Compute

Own your home



Platform as a Service

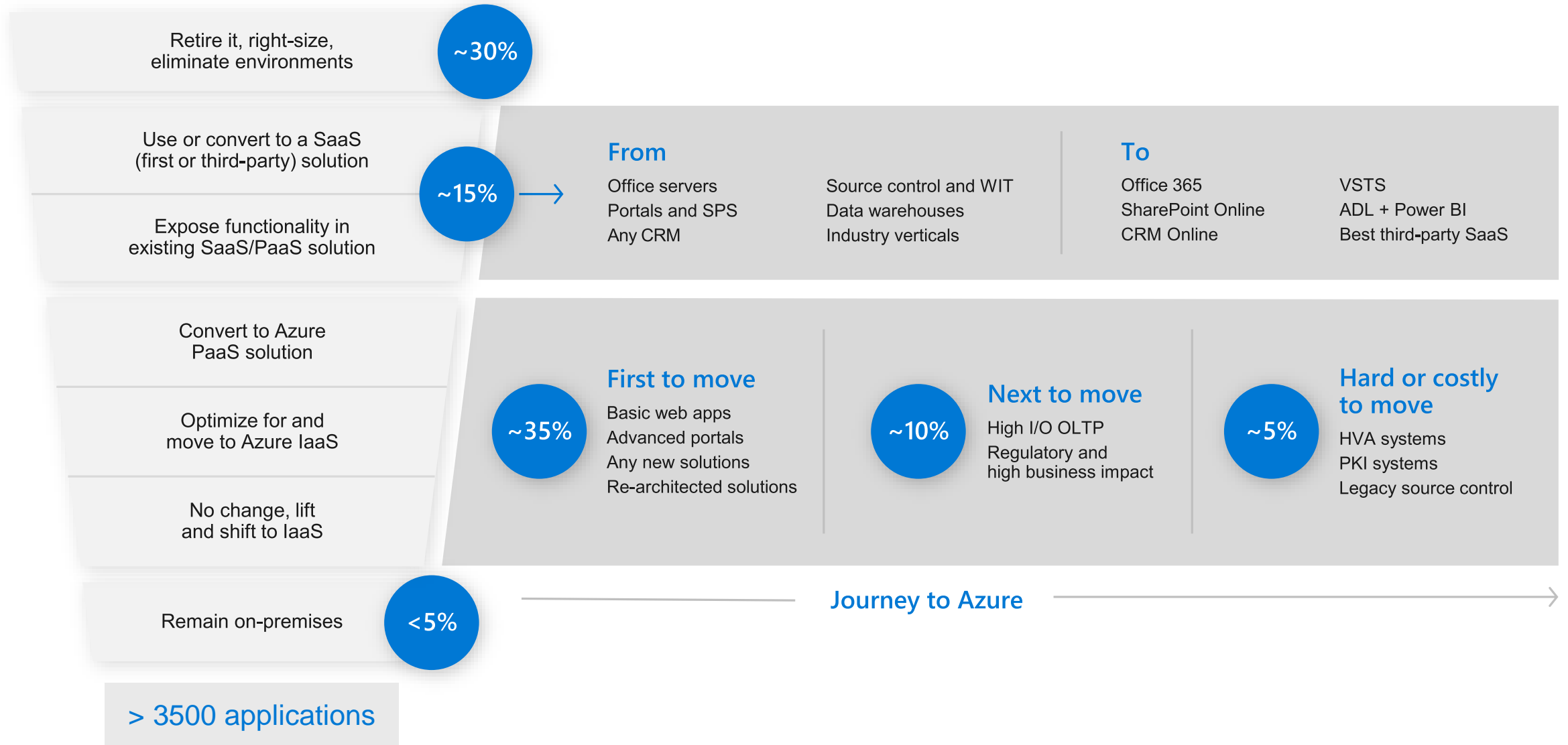
Bed and breakfast



Serverless

Hotel

# The Microsoft IT journey to Azure



## TOP 3 LEARNINGS

1 It's a great opportunity to 'clean house' - retire applications that are no longer used or consolidate and transition functionality to off-the-shelf solutions where possible.

2 No cloud hosting model (IaaS, PaaS, SaaS) should be taken off the table too early.

3 Move custom applications in stages:

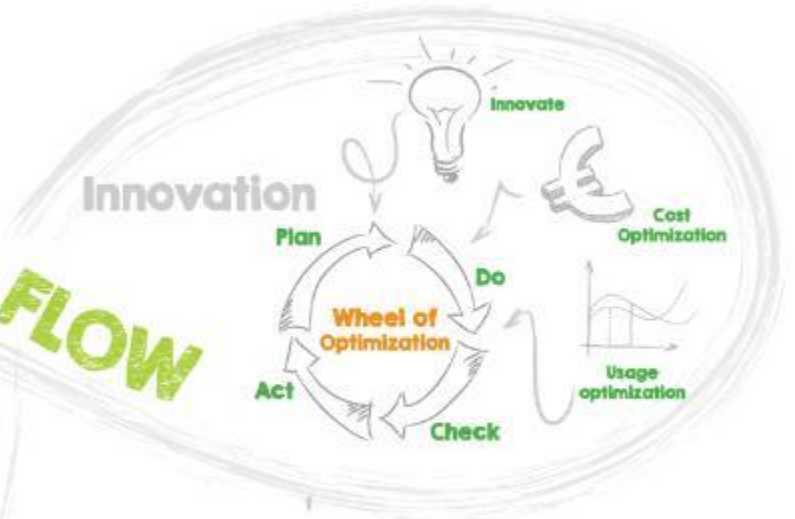
- ➔ Move simple workloads directly to PaaS: web sites, static portals, standard three-tier applications.
- ➔ Migrate complex solutions to IaaS first to unlock immediate benefits and gradually modernize later.
- ➔ Keep legacy/undocumented code as-is and surround it with serverless functions to add features.

**Download the eBook**

<https://azure.microsoft.com/resources/inside-microsoft-cloud-migration-journey/>



# DIGITAL FLOW



Hybrid Cloud



Any cloud

Unburden

Lift & Shift

Entreprise approach

Business problem

? WHY

Business Value

1 DISCOVERY & BUSINESS CASE

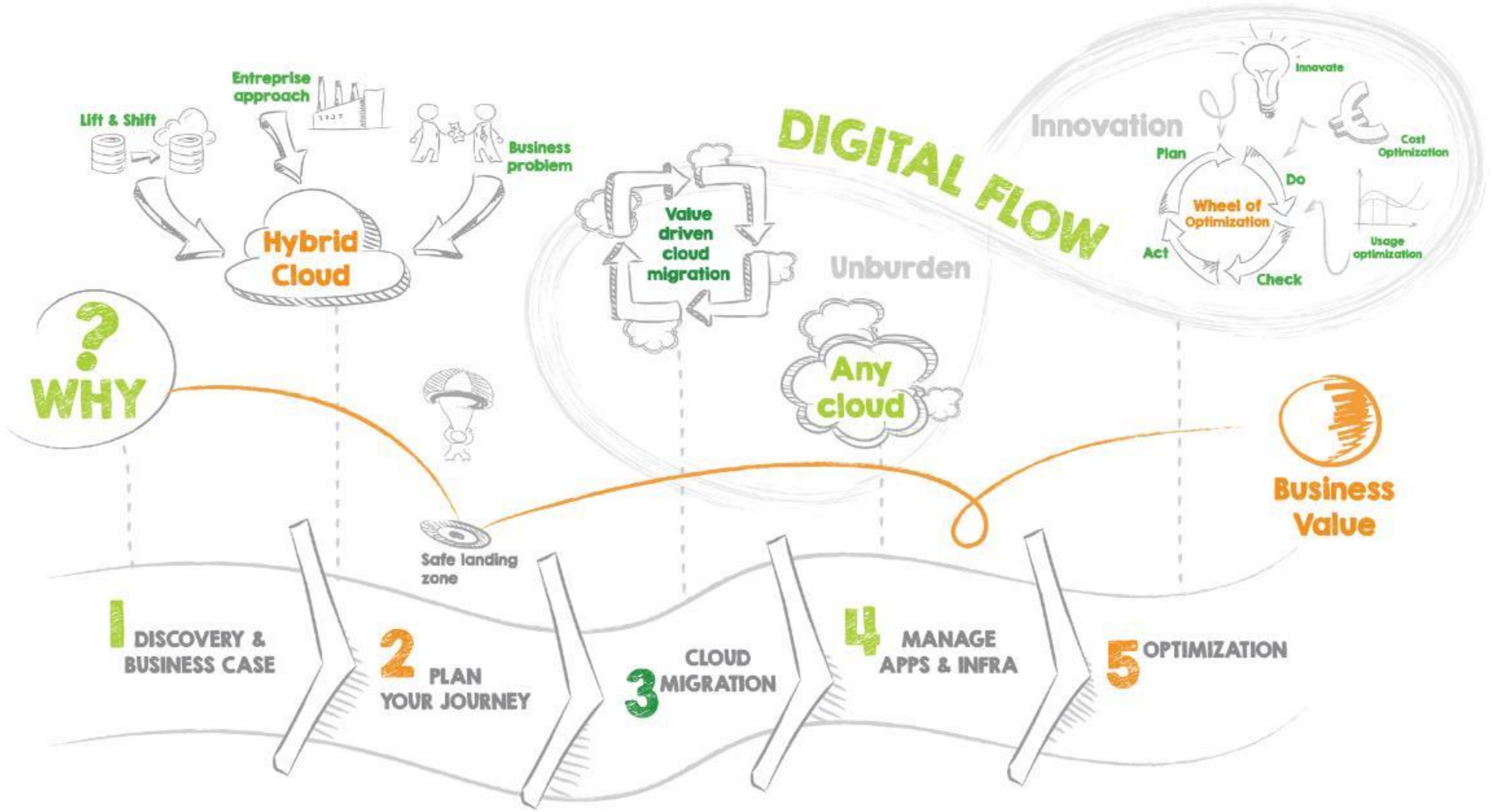
2 PLAN YOUR JOURNEY

3 CLOUD MIGRATION

4 MANAGE APPS & INFRA

5 OPTIMIZATION

Safe landing zone



# Top tips for tackling cultural shift

- 1 Assessing how the cloud could affect your culture
- 2 Carrying out a risk assessment focuses on people, not on technology
- 3 Finding board-level sponsors to act as champions of change
- 4 Developing a programme that combines positive employee communications with inclusivity
- 5 Putting in place a bottom-up channel for raising concerns



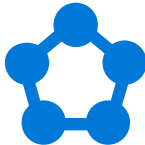
A person with blonde hair, wearing a dark green sweater, is holding a silver tablet with both hands. They are also holding a blue pen in their right hand. The background is a chain-link fence, and the lighting is soft, suggesting an outdoor setting. The text "What makes Azure a great place for application developers?" is overlaid in white on the image.

# What makes Azure a great place for application developers?

# A turn-key platform for Application Modernization



Orchestration  
(Kubernetes)



Microservices



Web Apps



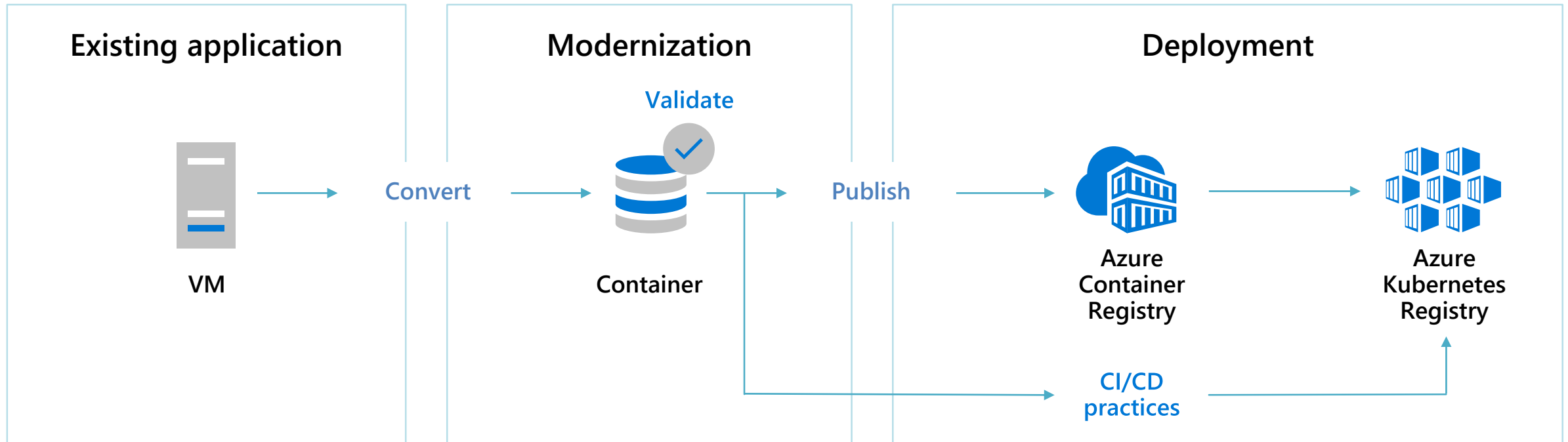
Event-driven  
Functions



# Refactoring with container technology

## Faster application deployment with integrated CD/CD tools and orchestration

- Containers support all frameworks and technology stacks across clouds and on-premises
- No OS overhead means improved packing density and more resource efficiency
- Faster application deployment with integrated CD/CD tools and orchestration



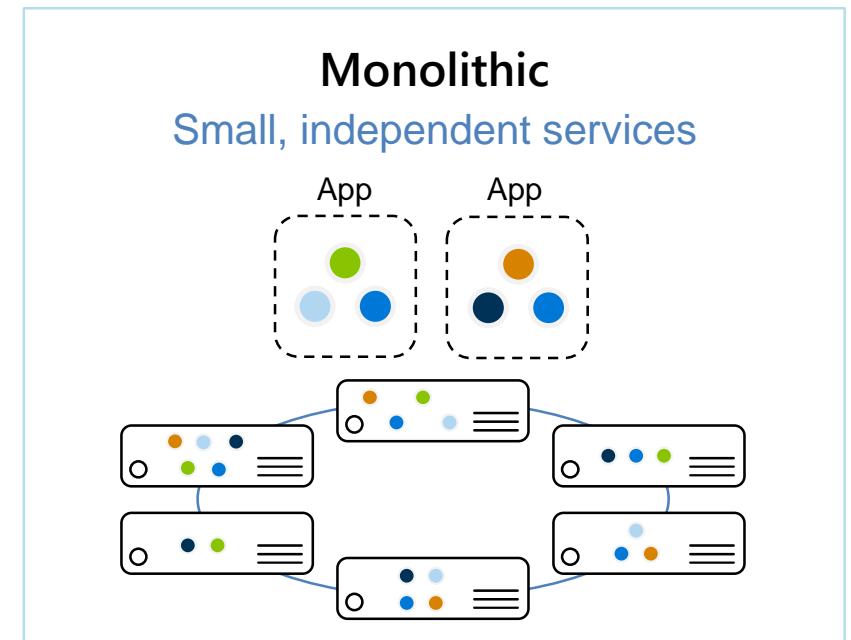
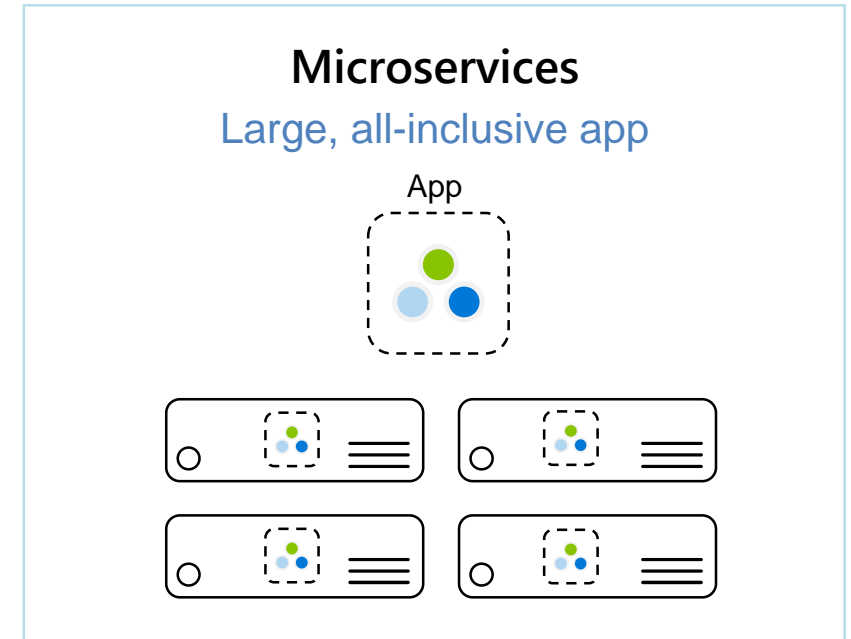
# Rearchitecting with microservices

More agile, scalable and resilient applications

Individual services can be upgraded, changed or taken down without impacting the application

Developers work on individual services, which are smaller, easier to manage and understand

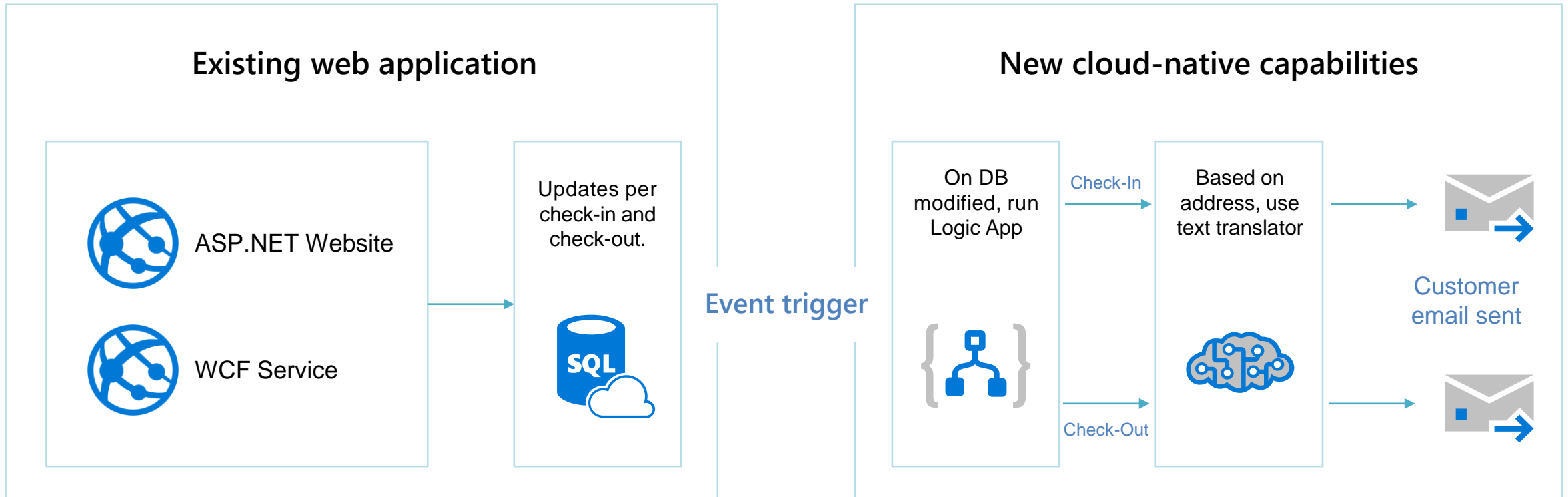
If individual services should fail, the application will continue to work without interruption



# Future-proofing applications with serverless

## Adding new capabilities to existing applications

- Existing code and functionality is left as-is and moved to managed cloud services
- New capabilities are added incrementally using serverless functions triggered by events

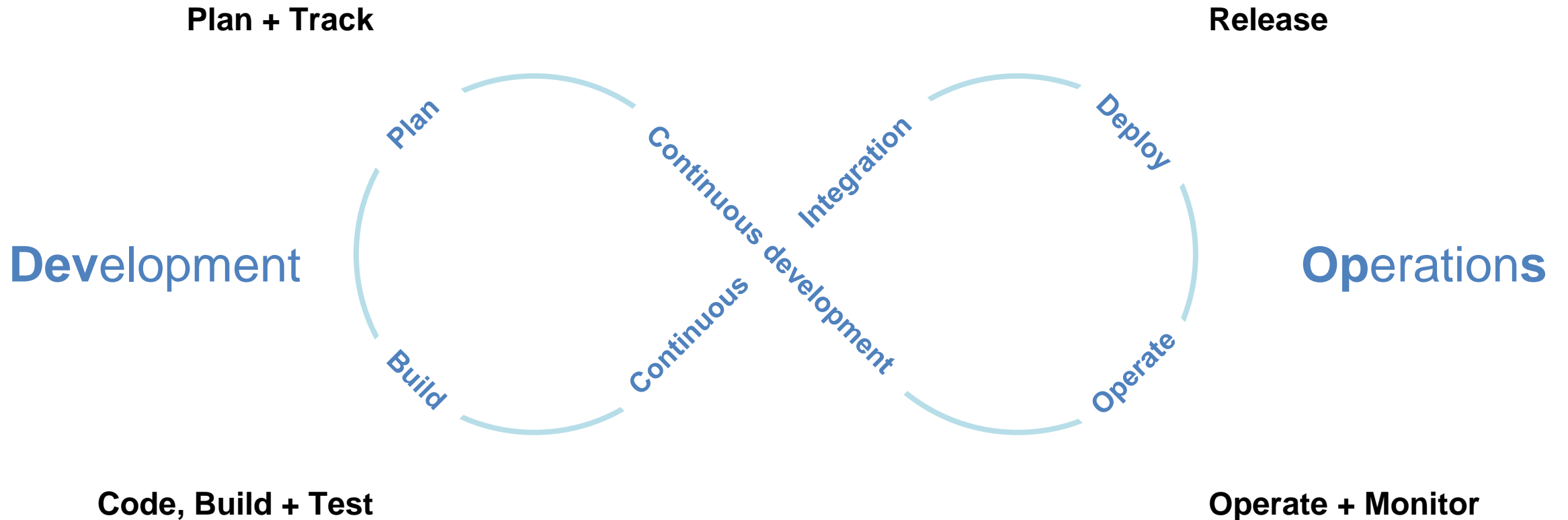


“By 2020, more than 50% of enterprises will run **mission-critical, containerized Cloud-Native applications** in production”.

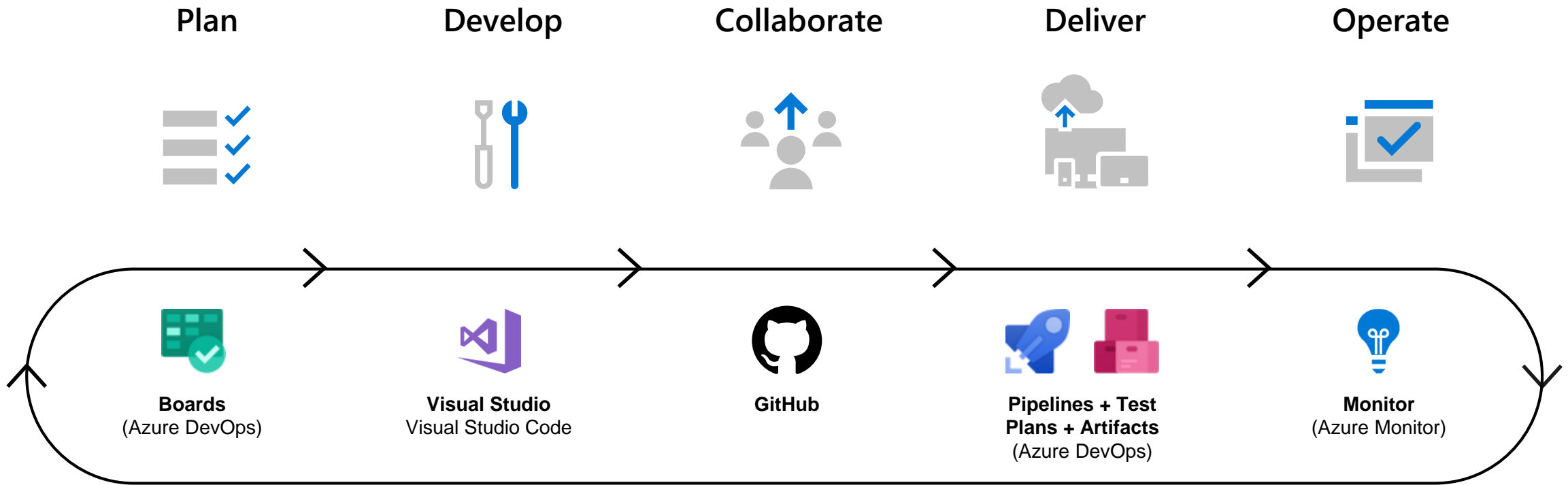
Gartner



# Deliver applications faster and more reliably



# Deliver applications faster and more reliably



Faster delivery to production • More business value



# What do you tell your boss ?

# Lower your TCO by moving to Azure

Azure offers many ways to save money

## 78%

savings by migrating datacenters to Azure instead of staying on-premises

## 68%

savings by rehosting applications on Azure PaaS

## 63%

savings by rearchitecting applications for Azure

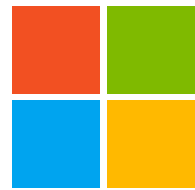
## 5x

lower cost for Microsoft workloads compared to AWS

### Source

Azure TCO Calculator at [www.azure.com/tco](http://www.azure.com/tco)





# Microsoft Azure

---

Productive + Hybrid + Intelligent + Trusted



## DELIGHT YOUR CUSTOMERS

Growing trust, accessibility, relevance, and revenue through engagement and innovation.

### Earn your customers' trust



Modern applications support co-creation, direct customer engagement, and tangible service

### Deliver a consistent experience across channels



Help your customers achieve a consistent flow across interaction channels in retail, commercial, and wholesale segments

### Engage customers at scale



Deliver consumer facing services at massive scale to increase revenue streams and tap new markets

### Multiply your business impact

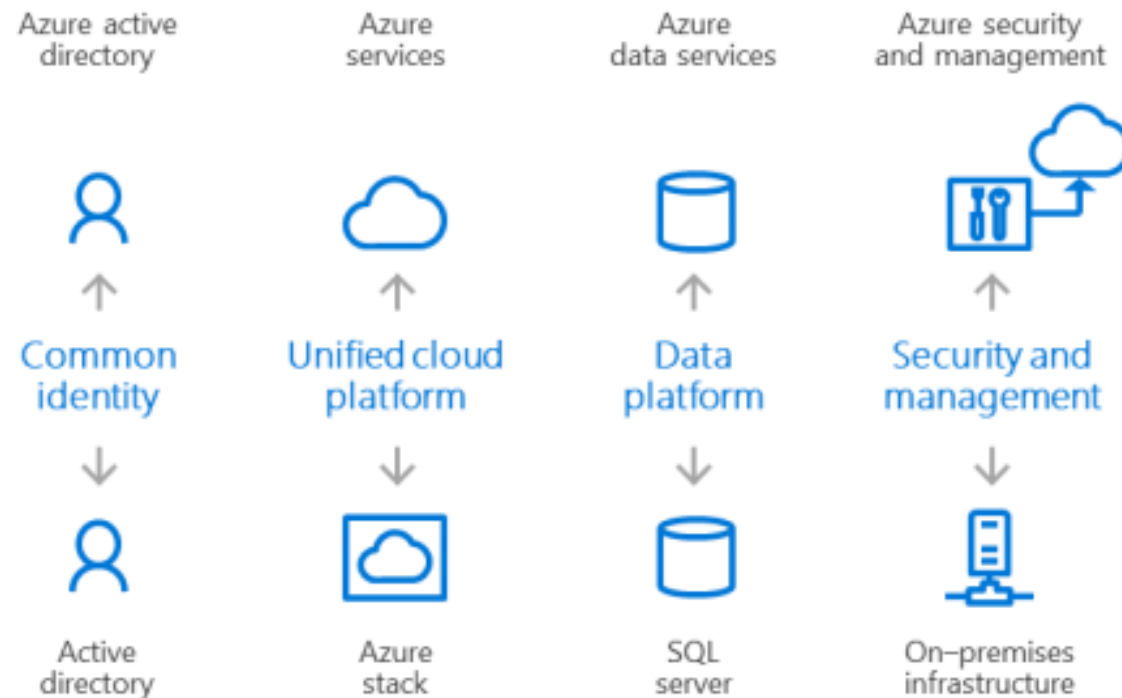


Multiply the impact your business makes on high value customer interactions with a combination of devices and digital services



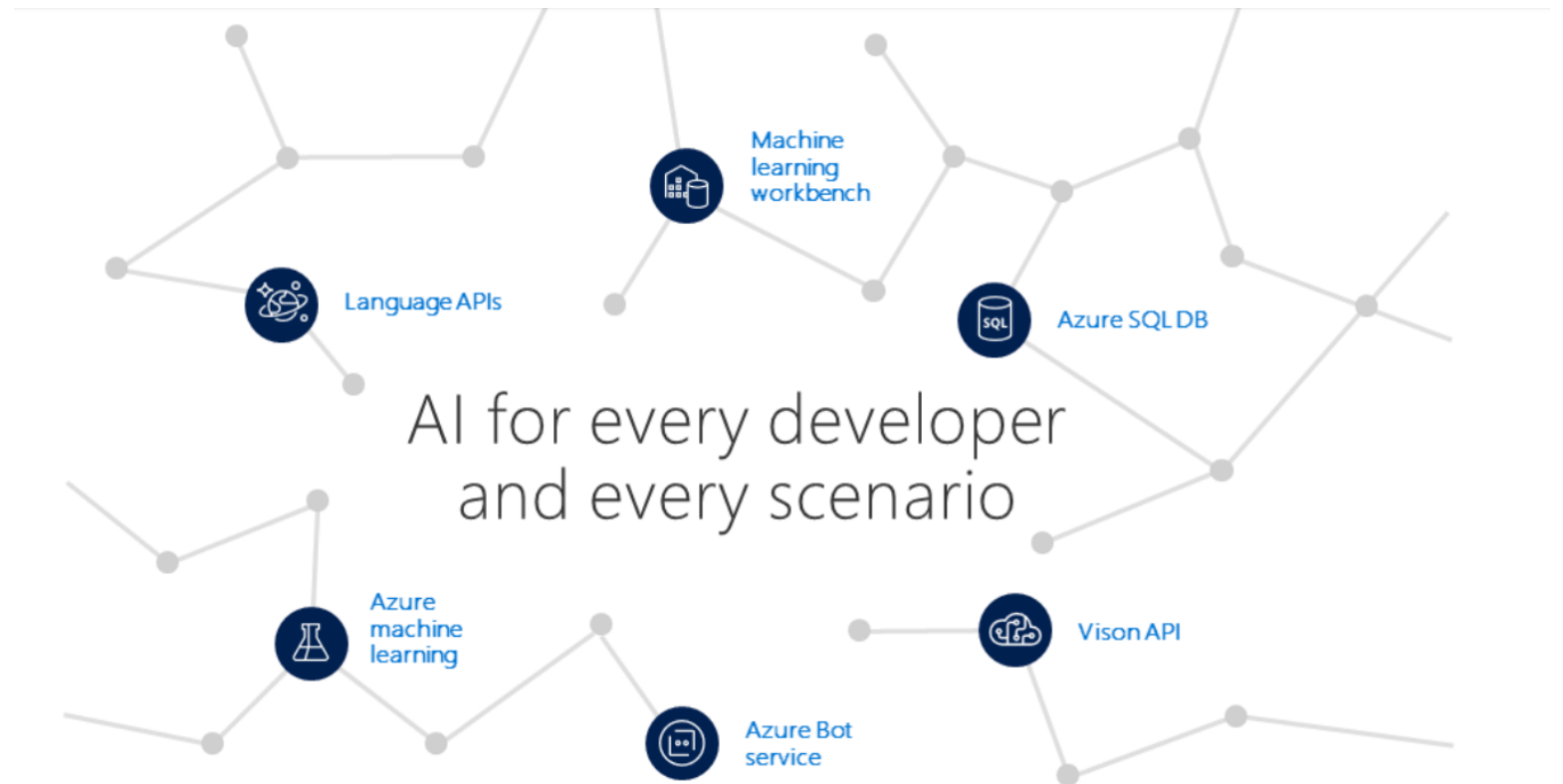
- The strength of the hybrid strategy is about the continuum of capabilities across the offerings, it's not just about the platform.
- Hybrid is more than just being able to move an application into the cloud.
- There are critical elements from identity, data, and security and management that have to be addressed.
- You don't have to be stuck in an all-or nothing choice – hybrid gives you the flexibility to move to the cloud when and how you want to.

## Hybrid



- In addition to having the traditional on-premises enterprise data tools— such as SQL Server—Azure provides SQL services that connects data to **AI** services
- This enables quick adoption of **new innovative technologies**, such as deploying a global mobile application that integrates with facial recognition services
- The **ease of integration** enables anyone to build solutions like that
- From bot frameworks to **cognitive services**, you can fundamentally change the way your business goes to market with Microsoft's power AI platform

Intelligent



# Trusted

Global	 ISO 27001	 ISO 27018	 ISO 27017	 ISO 22301	 SOC 1 Type 2				
	 SOC 2 Type 2	 SOC 3	 CSA STAR self-assessment	 CSA STAR certification	 CSA STAR attestation				
Industry	 PCI DSS level 1	 CDSA	 MPAA	 FACT UK	 Shared assessments	 FISC Japan	 HIPAA / HITECH Act		
	 HITR UST	 GxP 21 CFR Part 11	 MARS -E	 IG Toolkit UK	 FERP A	 GLBA	 FFIEC		
Regional	 Argentina PDPA	 EU model clauses	 UK G-Cloud	 China DJCP	 China GB 18030	 China TRUCS	 Singapore MTCS	 Australia IRAP/CCSL	 New Zealand GCIO
	 Japan my number act	 ENISA IAF	 Japan CS mark gold	 Spain ENS	 Spain DPA	 India Meit Y	 Canada privacy laws	 Privacy shield	 Germany IT Grundschutz workbook

## Security

Protect your enterprise from advanced threats across hybrid cloud workloads

### Azure Sentinel

Standing watch, by your side. Intelligent security analytics for your entire enterprise

### Security Center

Unify security management and enable advanced threat protection across hybrid cloud workloads

### Key Vault

Safeguard and maintain control of keys and other secrets

### Application Gateway

Build secure, scalable, and highly available web front ends in Azure

### Azure Information Protection

Better protect your sensitive information—anytime, anywhere

### VPN Gateway

Establish secure, cross-premises connectivity

### Azure Active Directory

Synchronize on-premises directories and enable single sign-on

### Azure DDoS Protection

Protect your applications from Distributed Denial of Service (DDoS) attacks

### Azure Dedicated HSM

Manage hardware security modules that you use in the cloud

ON  
WORLD  
THE  
SHOW